

Application of Creative Soft Decoration in New Chinese Furniture Design

Wang Yantao^{1,*}, Jiang Zhongwu²

¹Guangdong Country Garden Polytechnic, Qingyuan City, Guangdong Province, 511510, China

²Guangdong Construction Polytechnic, Qingyuan City, Guangdong Province, 511510, China

*Corresponding Author

Keywords: Aesthetic Consciousness, New Chinese Style, Soft Decoration, Home Design

Abstract: with the Development of Society, People's Aesthetic Consciousness Gradually Increases, and They Have a Higher Level of Pursuit for the Indoor Space Environment. Soft Decoration Attracts People's Attention and Love for Its Unique Artistry and Functionality. Designers Are Committed to Creating a Home Design Style with Rich Cultural Connotation, Thus a New Chinese Style with Chinese National Cultural Characteristics Has Emerged. Traditional Elements in Home Design and Modern Culture Are Not Isolated or Opposed, But a Process of Continuous Development and Interaction with the Needs of Society. Contemporary Designers Have Integrated Traditional Chinese Culture and Design Concepts into Modern Design, Showing a Combination of Modern and Traditional Interior Decoration Design Style. How to Apply Chinese Traditional Cultural Elements to the Design of Soft Clothing At Home and Create a New Chinese Style Creative Soft Clothing Design That Meets the Living and Spiritual Needs of Contemporary Consumers is the Main Problem to Be Explored and Studied in This Paper.

1. Introduction

The New Chinese Style Home Design is Different from the Traditional Chinese Style, Incorporating Many Modern Design Elements, Forming a Decorative Style That Meets the Living Conditions and Aesthetic Needs of Modern People [1]. with the Rapid Development of Our Country's Social Economy and the Substantial Improvement of People's Living Standards, People's Living Conditions Have Been Improved, People's Aesthetic Awareness Has Gradually Increased, and Modern People Have Higher and Higher Requirements for the Beauty of Home Life [2]. with the Improvement of Our Country's International Status and the Expansion of International Cultural Exchanges, the Spreading Power and Influence of Chinese Culture in the World Are Also Becoming More and More Obvious, Which Has Become a Focus of Research by Scholars All over the World. Therefore, the Position of Cultural Elements in Home Design Has Gradually Gained People's Favor. Because of Its Artistry and Culture, Soft Decoration Has Gradually Improved Its Position in Interior Decoration [3]. At the Same Time, Soft Decoration is Also Functional and Practical, So It is Deeply Loved by Designers and Consumers. Home Design Has Received More and More Attention from People. It Has Changed from the Situation That Only a Few People Knew and Used It Before, and Gradually Entered More and More Families with Several People [4]. Soft Decoration, as a Movable Decoration, Fully Reflects the Owner's Taste, Living Habits and Interests in the Whole Decoration, and is the Finishing Touch to Create a Home Atmosphere.

The New Chinese Style is Not Only a Stack of Traditional Decorative Elements, But Also a Combination of Modern and Traditional Elements through Understanding of Traditional Culture, Integration of Modern Technology and Technology, Full Absorption of the Language of Traditional Excellent Chinese Home Design Culture, and Combination of It with Modern Design and Fashionable Life Concepts to Create a Living Space with Traditional Flavor in China with Modern Aesthetics. Today, with the Continuous Enrichment and Development of Material Culture, People Are No Longer Satisfied with the Practical Performance of Space, and the Demand for the Artistic Implication and Cultural Characteristics of Indoor Space is Gradually Emerging. as a Result, the Indoor Environment is Developing Towards Individuation, Comfort and Culture [5]. Soft

Decoration Has Various Styles, Complete Types and Great Selectivity. Its Greatest Advantage Lies in Its Convenient Movement and Replaceability, Making It Easier for Consumers to Participate in Home Design [6]. Therefore, Soft Decoration Has Gradually Become the Leading Role in Home Design. How to Apply Chinese Traditional Cultural Elements to Interior Soft-Fitting Design and Create a New Chinese Style Creative Soft-Fitting Design That Meets the Living and Spiritual Needs of Contemporary Consumers, and How to Apply It to the Interior Space Design of Homes, Are the Main Issues to Be Explored and Studied in This Paper.

2. New Chinese Design Ideas and New Chinese Style

2.1 New Chinese Design Thought

New Chinese style, also known as modern Chinese style, is a home design style that extracts the essence of Chinese traditional culture and modern deducts the traditional Chinese style in order to meet the aesthetic needs of the people. The new Chinese interior soft-fitting design stresses the integrity of the design, and the new Chinese soft-fitting design language should be organically unified with the new Chinese hard-fitting design language [7]. To achieve this effect, the simplest way is to use items with similar Chinese decorative elements to penetrate and unify. In terms of design concept, the new Chinese style is a new design method based on the analysis and summary of traditional Chinese style and unremitting exploration [8]. The formation of continuity and integrity of space is conducive to the formation of a more unified visual experience, thus creating a harmonious new Chinese design style. The appearance of new Chinese style shows people's recognition and yearning for traditional excellent culture. This design style is similar to the Renaissance movement in the West. Because residents have different interests, cultures, occupations and other aspects, the new Chinese style soft decoration design style is also very different. Designers should fully communicate with owners, understand their aesthetic orientation and value orientation, and then design soft decoration.

2.2 Aesthetic Orientation of New Chinese Style Design

Some people do not agree with the revival of traditional culture. They think that the traditional culture is too conservative and complicated, which will hinder people's ideological progress. Other people think that the contemporary cultural connotation is lacking and it is urgent to absorb the essence from the traditional culture. The new Chinese color positioning is no longer limited to traditional Chinese household colors such as red, black and wood. Because the domestic home design has not formed a complete system, most designers simply imitate and copy foreign design styles, excessively pursue gorgeous and grandiose design effects, and lack connotation, resulting in our home design ideas are too empty. The modern new Chinese style uses a wide range of colors, ranging from thick to light, with rich colors such as red and green, to light ones such as ink and wash paintings. Many intermediate colors are also mixed between shades. The intermediate colors also play a good and harmonious role. The collocation of new Chinese style colors cannot be as moderate as traditional Chinese style colors, but a certain color system will play a major role in the home.

The role of soft decoration cannot be ignored. In today's interior environment design and decoration process, its status has been continuously improved. With the popularization of the concept of low-carbon life, more and more consumer groups begin to choose soft decoration. The implementation of the general principle of interior design cannot be separated from the integration of rational thinking and perceptual thinking. More and more innovative designs and styles of interior design pay more attention to the rational application of modern science and technology. New materials and technologies should be adopted to combine sound, light, heat and science. Designers need to think about how to unify all kinds of important relationships to achieve the overall optimal effect when they carry out creative ideas. The cooperative design and operation process is shown in Figure 1.

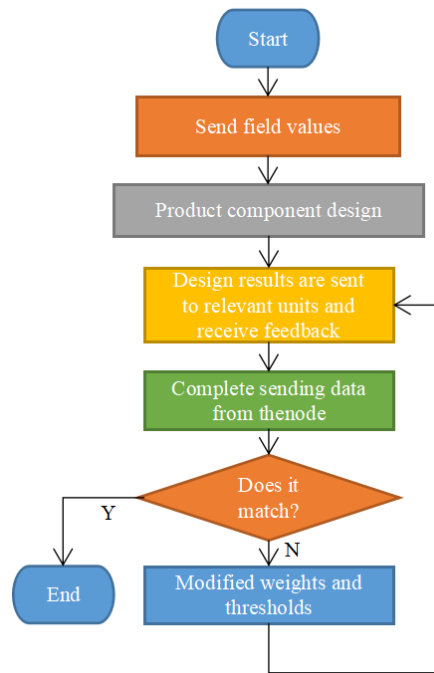


Fig.1 Cooperative Design Operation Process

3. Application of Creative Soft Decoration in New Chinese Furniture Design

With the continuous progress of society and the recovery of national consciousness, people are no longer addicted to the worship of foreign design styles, and gradually sort out the clue from blind imitation and duplication. The sofa with traditional style is used in furniture selection. Its shape is simple, its curve is smooth, its elegance is full of aura, and its nature is precious. There are various styles of indoor space. Generally, we have determined the overall style before the construction of indoor decoration. After the completion of basic decoration, the filling of the entire indoor space will be completed by soft decoration. Therefore, soft decoration plays a vital role in the formation of the later indoor style. Interior space design can give people visual impact from the perspective of shape, color and material, and spiritual enjoyment from the perspective of aesthetics [9]. The interior decoration of the new Chinese style can adopt auspicious patterns designed by natural plants or dragons and phoenixes, and sofas and cushions can be made of linen natural color cloth or exquisite satin cloth. Each element of soft decoration has distinct characteristics. Placing soft decorations with obvious style characteristics in indoor space can inject soul into the originally empty and single indoor space.

The first development in parametric design of indoor environment is geometric modeling, which deals with basic problems such as geometry and shape representation of objects, research on graphic data structure, etc. The path density, node number and center potential are analyzed. As shown in Table 1.

Table 1 Analysis of Indoor Environment Parametric Design Structure

Network	Path density	Number of nodes	Central potential
Encounter information	1623	2228	0.719
Mutual information	2435	2125	0.558
Weighted summation	647	2533	0.671

Reasonable use of soft decorative elements such as curtains and carpets can divide the space visually and psychologically and improve the utilization rate of the space under the condition that the indoor wall structure cannot be changed. Soft decoration occupies every corner of the interior space. Each soft decoration element has its own unique advantages and plays a different role in the new Chinese interior space [10]. For example, on the sofa, we can choose several cloth pillows with

different colors from the sofa and successfully attract people's visual focus through several pillows. The soft decoration in the new Chinese style not only meets the basic requirements of its functions, but also plays a role in beautifying the space with unique shapes, exquisite patterns and traditional materials. In a sense, the style of soft decoration can represent the cultural style of a nation and has certain cultural characteristics. Against the background of culture, soft decoration can strongly show the cultural characteristics of a country or a nation through design forms. The formation and development of Chinese traditional elements are the crystallization of people's wisdom. The application of traditional elements to modern decoration is people's love and pursuit of history and culture.

4. Conclusions

In the modern decoration industry, the development of soft decoration industry has become an inevitable trend. With the continuous exchange and cooperation between domestic and foreign design, home design and soft clothing industry are gradually tending to internationalization. For designers of new Chinese style interior soft decoration design, it is necessary to strengthen the understanding of traditional cultural knowledge and extract the essence of traditional culture through the support of deep traditional cultural theoretical foundation. In the humanized and personalized society, people's pursuit of life and the return of personal value have received extensive attention and even become the focus. People's pursuit of spiritual value is also getting higher and higher, making the development prospect of soft decoration time-consuming. The new Chinese interior style is a modern innovative design style based on traditional culture. Nowadays, domestic home design needs to consolidate and develop this new design style which integrates nationality, culture and times. In the process of soft decoration design of new Chinese style, it is necessary to deeply understand Chinese history and traditional culture, analyze and summarize people's worship psychology and actual needs for traditional culture. The new Chinese interior style meets the modern people's nostalgia and remembrance of traditional culture and is favored by more and more people. In the future, the new Chinese style and soft decoration design are still worth further research and exploration.

References

- [1] Martinetti S. (2017). The Fabricated Image: Pictorial and Textile Transpositions in the Work of Robert Gober. *The Journal of Modern Craft*, vol. 10, no. 2, pp. 119-135.
- [2] Kerber A U, Jörg Piper, Vogt T, et al. (2015). Histological Pop Art: New Dimensions in Photomicrography. *Journal of Advanced Microscopy Research*, 10, no. 3, pp. 159-163.
- [3] Battigelli A. (2017). Material Culture and Sedition, 1688–1760: Treacherous Objects, Secret Places by Murray Pittock. *The Scriblerian and the Kit-Cats*, vol. 49, no. 2, pp. 53-55.
- [4] Malkin J, Ferenc J. (2015). Ensuring safe hospitals through interior design. *Health facilities management*, vol. 28, no. 12, pp. 12-13.
- [5] Orlando E J. (2017). “Perilous Coquetry”: Oscar Wilde's Influence on Edith Wharton and Ogden Codman, Jr.. *American Literary Realism*, vol. 50, no. 1, pp. 25-48.
- [6] Zhang J, Feng H, Qin Q, et al. (2016). Interior design of three-dimensional CuO ordered architectures with enhanced performance for supercapacitors. *Journal of Materials Chemistry A*, vol. 4, no. 17, pp. 6357-6367.
- [7] Boehm S, Kopec D. (2016). Interior design as a post-disaster team partner. *International Journal of Disaster Resilience in the Built Environment*, vol. 7, no. 3, pp. 276-289.
- [8] Anderson E. (2015). Hans Makart's Technicolor Dream House: Decoration and Subjectivity in Nineteenth-Century Vienna. *West 86th: A Journal of Decorative Arts, Design History, and Material Culture*, vol. 22, no. 1, pp. 3-22.

- [9] José Amarilio Barbosa, Catarina Araújo, Mateus R, et al. (2015). Smart interior design of buildings and its relationship to land use. *Architectural Engineering and Design Management*, vol. 12, no. 2, pp. 1-10.
- [10] Kremser F, Guenzkofer F, Bengler K. (2015). User-centred interior design of a small electric vehicle using RAMSIS. *International Journal of Human Factors Modelling & Simulation*, vol. 3, no. 3/4, pp. 329-345.